



# RFWD3 Polyclonal Antibody

<b>Catalog No</b>	YP-Ab-01978
<b>Isotype</b>	IgG
<b>Reactivity</b>	Human;Rat;Mouse;
<b>Applications</b>	WB;IHC;IF;ELISA
<b>Gene Name</b>	RFWD3
<b>Protein Name</b>	E3 ubiquitin-protein ligase RFWD3
<b>Immunogen</b>	The antiserum was produced against synthesized peptide derived from human RFWD3. AA range:374-423
<b>Specificity</b>	RFWD3 Polyclonal Antibody detects endogenous levels of RFWD3 protein.
<b>Formulation</b>	Liquid in PBS containing 50% glycerol, 0.5% BSA and 0.02% sodium azide.
<b>Source</b>	Polyclonal, Rabbit,IgG
<b>Purification</b>	The antibody was affinity-purified from rabbit antiserum by affinity-chromatography using epitope-specific immunogen.
<b>Dilution</b>	WB: 1/500 - 1/2000. IHC: 1/100 - 1/300. ELISA: 1/40000.. IF 1:50-200
<b>Concentration</b>	1 mg/ml
<b>Purity</b>	≥90%
<b>Storage Stability</b>	-20°C/1 year
<b>Synonyms</b>	RFWD3; RNF201; E3 ubiquitin-protein ligase RFWD3; RING finger and WD repeat domain-containing protein 3; RING finger protein 201
<b>Observed Band</b>	85kD
<b>Cell Pathway</b>	Nucleus . Nucleus, PML body . Cytoplasm . In undamaged cells, found both in the cytoplasm and in the nucleus, partially associated with PML nuclear bodies (PubMed:21558276). In response to replication block, such as that caused by hydroxyurea treatment, or to DNA damage caused by ionizing radiations or doxorubicin, recruited to the nucleus, to stalled replication forks or to sites of DNA repair (PubMed:21504906, PubMed:28575657). This recruitment depends upon RPA2 (PubMed:21504906). .
<b>Tissue Specificity</b>	Brain,Teratocarcinoma,Testis,
<b>Function</b>	PTM:Phosphorylated upon DNA damage, probably by ATM or ATR.,similarity:Contains 1 RING-type zinc finger.,similarity:Contains 3 WD repeats.,
<b>Background</b>	PTM:Phosphorylated upon DNA damage, probably by ATM or ATR.,similarity:Contains 1 RING-type zinc finger.,similarity:Contains 3 WD repeats.,



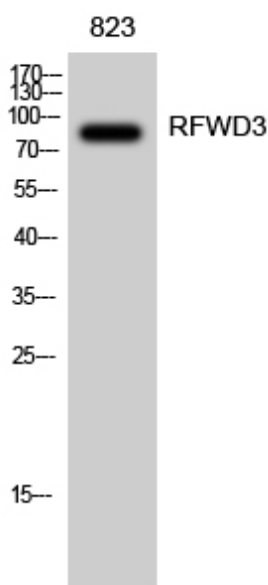
### matters needing attention

Avoid repeated freezing and thawing!

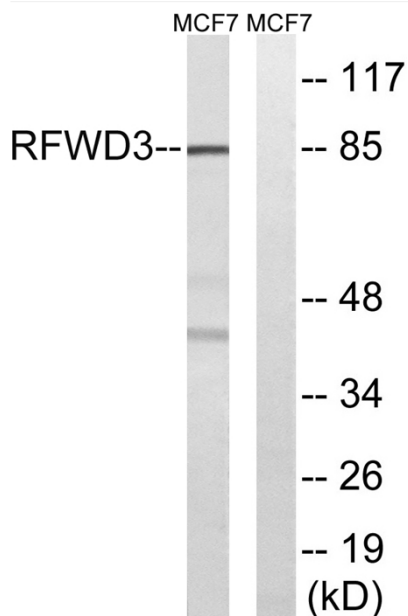
### Usage suggestions

This product can be used in immunological reaction related experiments. For more information, please consult technical personnel.

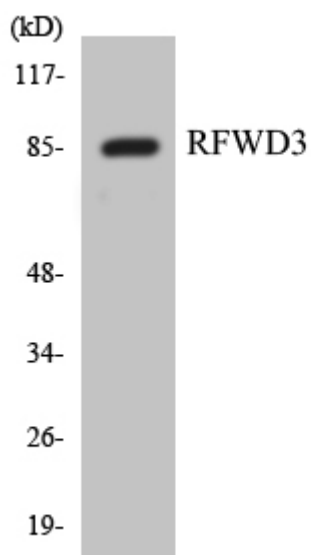
## Products Images



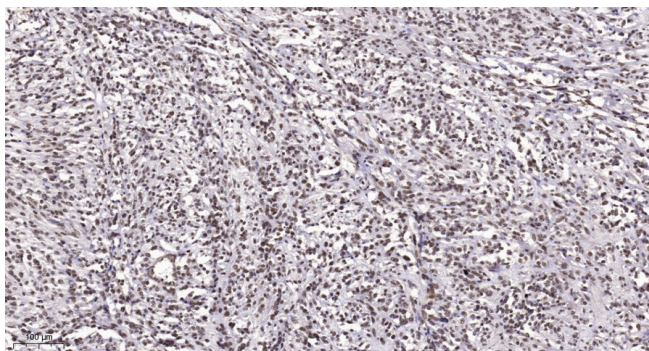
Western Blot analysis of 823 cells using RFWD3 Polyclonal Antibody diluted at 1:2000



Western blot analysis of lysates from MCF-7 cells, using RFWD3 Antibody. The lane on the right is blocked with the synthesized peptide.



Western blot analysis of the lysates from HepG2 cells using RFWD3 antibody.



Immunohistochemical analysis of paraffin-embedded human Small intestinal stromal tumor. 1, Tris-EDTA, pH9.0 was used for antigen retrieval. 2 Antibody was diluted at 1:200 (4° overnight). 3, Secondary antibody was diluted at 1:200 (room temperature, 45min).